

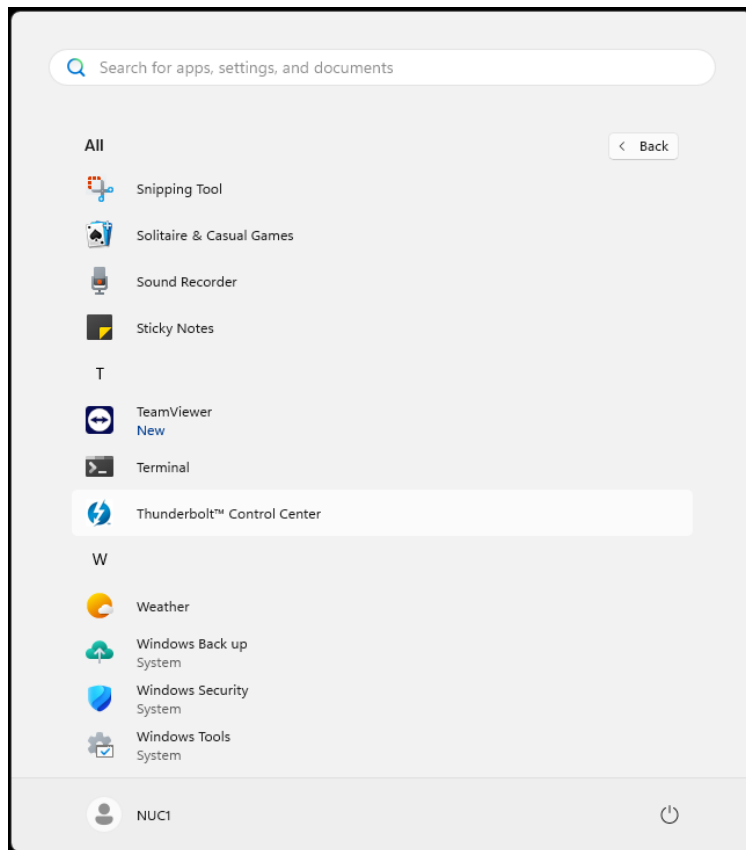
## Pre-requisites for Thunderbolt Connected Drives

### Initial Cabling and Power Sequence

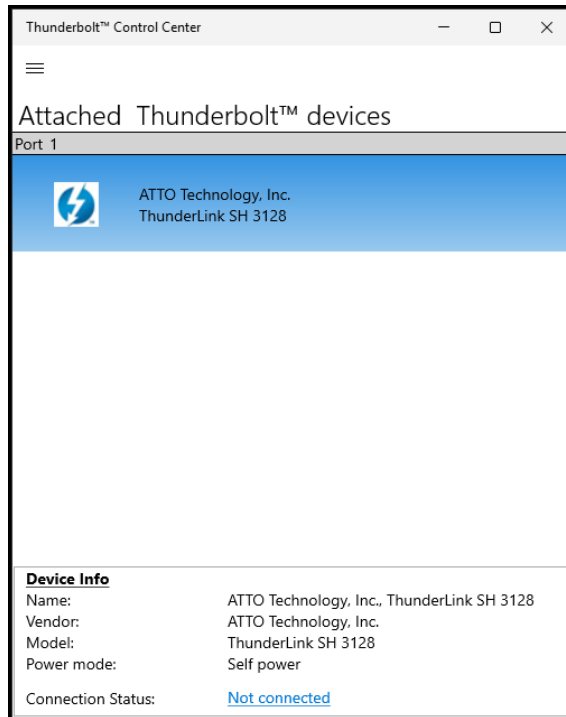
1. With all devices powered off, connect the LTO drive to your system using a Thunderbolt cable.
2. Power on the LTO drive, allowing it to complete its Power On Self Test (POST) sequence, waiting for the green light on the front of the drive becomes solid green, indicating the drive is 'Ready'.
3. Power on your system.

### Thunderbolt Setup in Windows

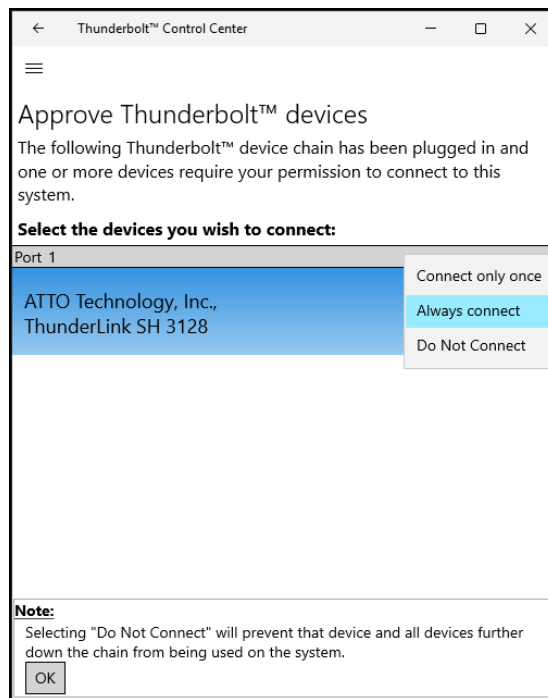
1. Login to your device.
2. Install the Thunderbolt Control Centre app from the Microsoft App Store on your system
3. Click on the Start icon. Open all on the drop down then scroll to and click on the Thunderbolt Control Center, as illustrated below.



3. The Thunderbolt connected tape drive should appear as illustrated below. At the very bottom of the screen, it may show "Not Connected". Select the 'Not connected' hyperlink.



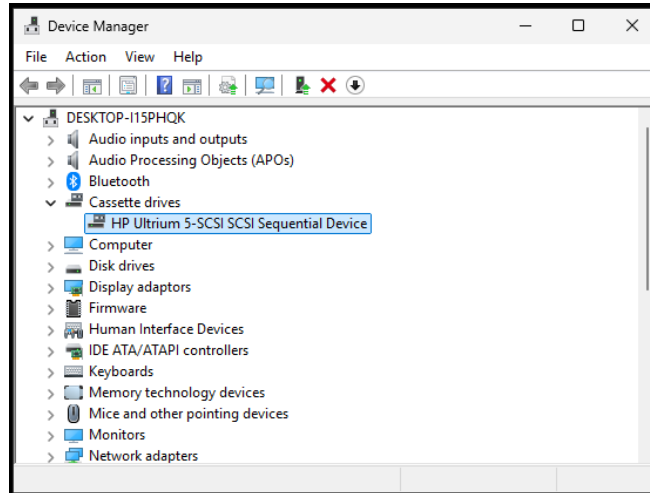
4. In the Approve Thunderbolt Devices list, select 'Always Connect' from the drop-down menu as shown:



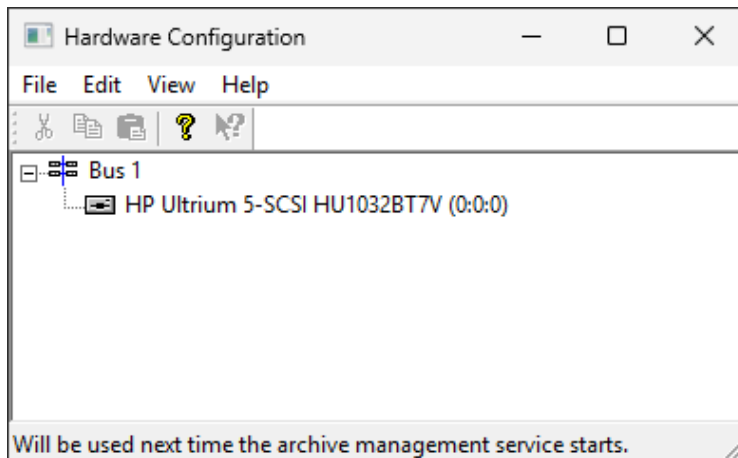
5. Reboot the system.

## Final Steps

1. Right-click on the Start icon and select Device Manager. Normally the LTO device drive will have been installed automatically. You should check the Device Manager listing to ensure that this is the case. If so, the LTO drive will appear under tape drives as shown below.



2. A XenData hardware configuration utility must now be run. To run, double click on C:\ProgramFiles\XenData\Archive Series\HWConfig. This will launch the hardware configuration utility shown below.



If there is a red marker against the drive, as shown above, right click the drive and enable it. You may need to make sure the XenData Archive Series Service is stopped first.

3. Reboot the Windows system and the system is now ready for use